

Storm Ashley, 20 to 21 October 2024

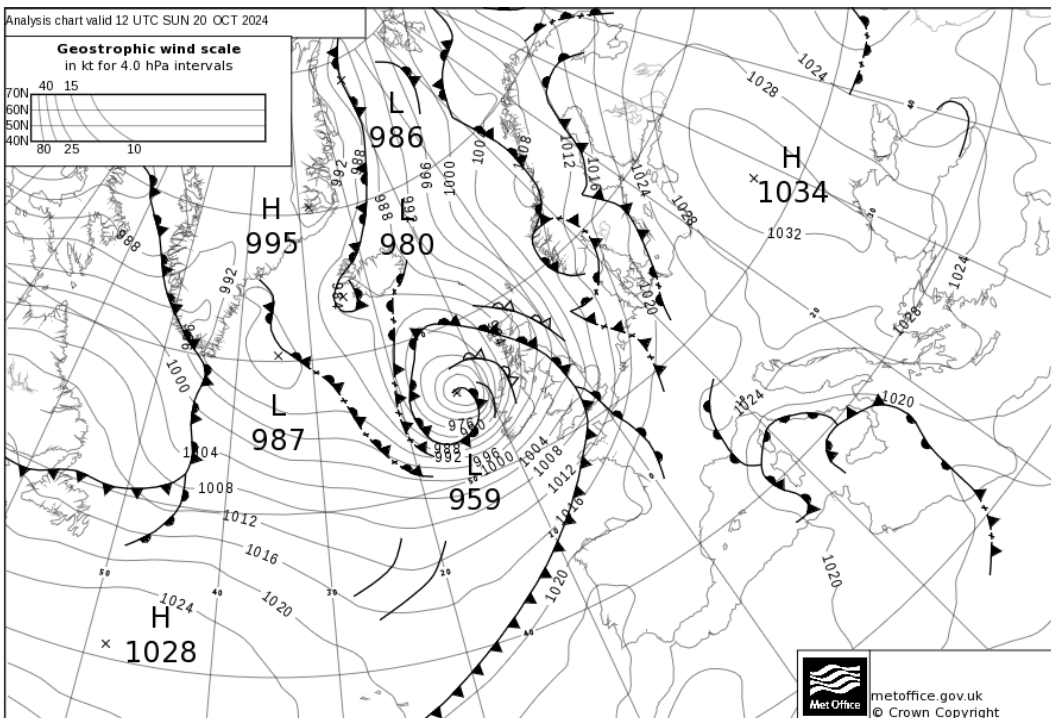
Storm Ashley, the first named storm of the 2024/25 season, brought wet and windy weather to the UK in late October with the strongest winds across north-western areas. This was a powerful, although not exceptional, Atlantic autumn storm.

Impacts

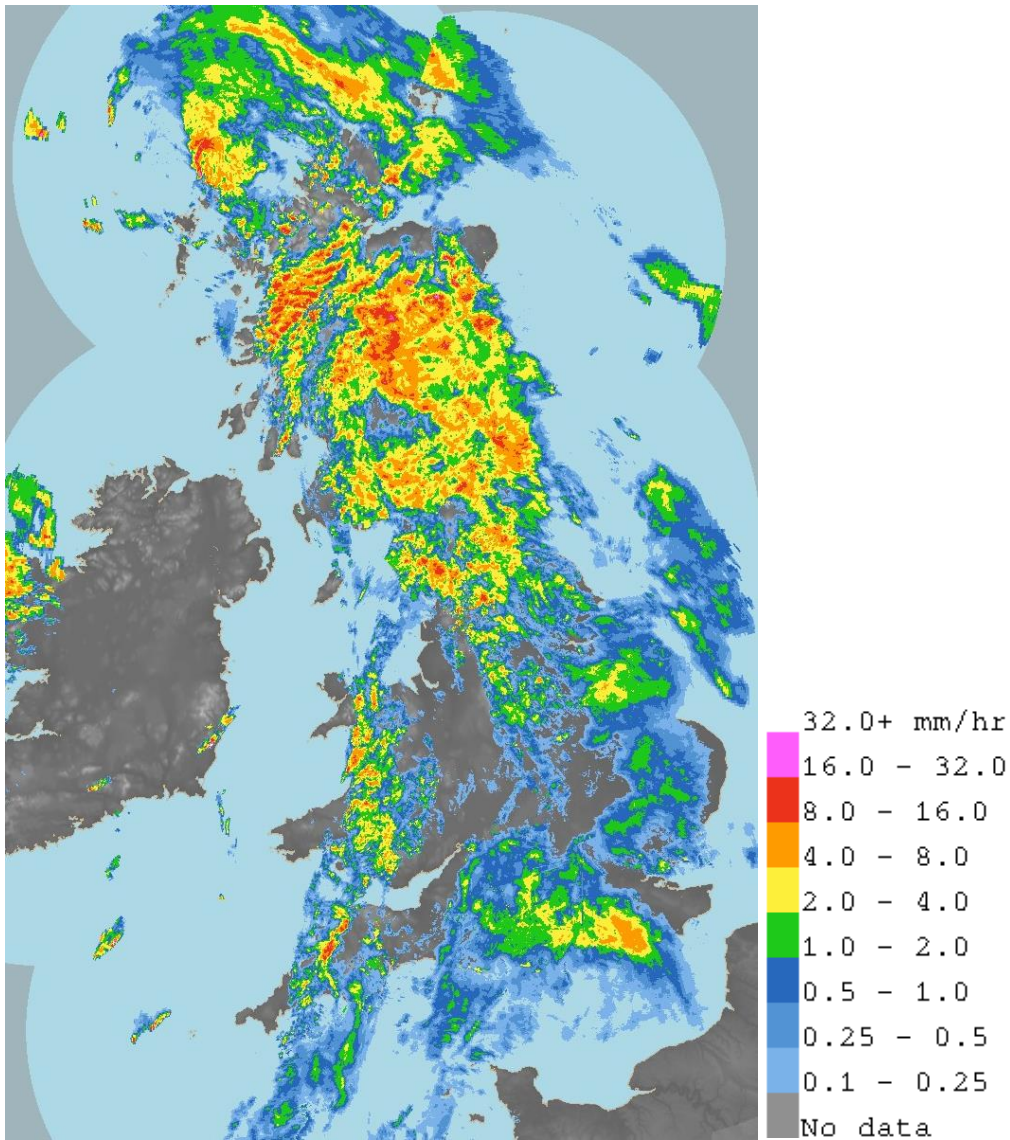
The storm brought travel disruption to the worst affected areas in the north and west. Ferry services in western Scotland and Northern Ireland were cancelled and dozens of flights cancelled at Belfast City Airport due to strong winds. In Scotland, some rail services were cancelled or had speed restrictions in place. Large waves battered exposed coastlines with beach material thrown up, and over 200 homes in north-east Scotland experienced loss of power. The Great South Run in Portsmouth, Hampshire was cancelled because of safety concerns.

Weather data

The analysis chart at 1200UTC 20 October 2024 shows storm Ashley approaching the UK. The storm interacted with a powerful jetstream as it approached the UK, rapidly intensifying and deepening (termed 'explosive cyclogenesis') as the central pressure dropped from 988hPa at 0600UTC 19 October to 952hPa at 0600UTC 20 October.



The rain-radar image at 0900UTC 20 October 2024 shows the frontal rain from storm Ashley. As is typical for a storm like this, the wettest weather was across the West Highlands and English Lake District.



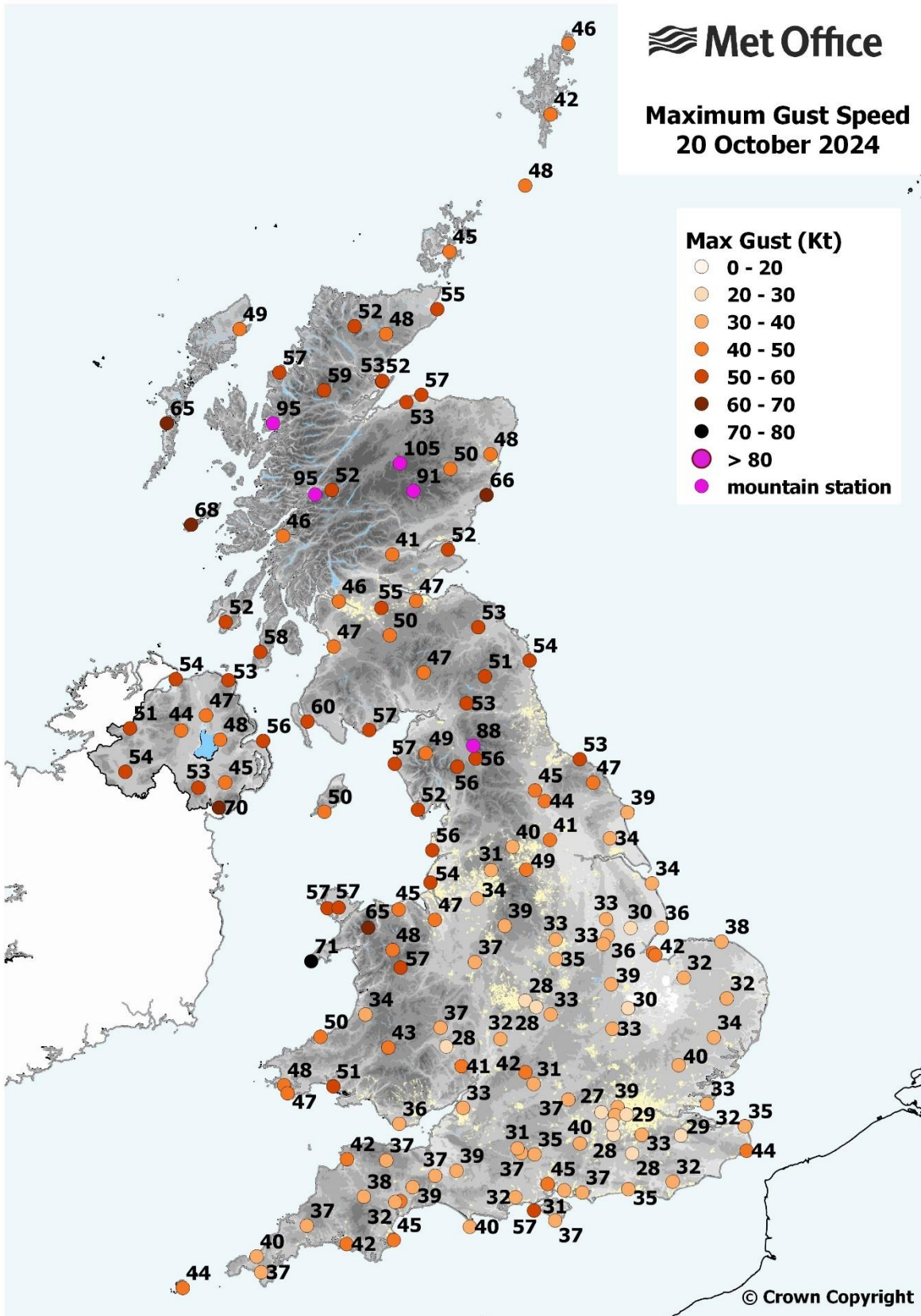
The satellite image shows storm Ashley approaching the UK on 20 October 2024, with clear skies behind the occluded front stretching from north-east Scotland to south-east England. The strongest winds from a storm like this typically occur immediately to the south of the low pressure centre. Image copyright Met Office / NOAA / NASA.



The map below shows maximum gust speeds across the UK on 20 October 2024, with the strongest winds of 50 to 60Kt (58 to 69mph) or more across north-western parts of the UK. The highest gusts were 71Kt (82mph) at Aberdaron, Gwynedd, 70Kt (81mph) at Killowen, County Down, 68Kt (78mph) at Tíree, Argyll and 66Kt (76mph) at Inverbervie (Kincardineshire). Wind gusts were especially high across upland areas, with 105Kt (121mph) at Cairngorm Summit, Inverness-shire (at 1237masl). The five mountain stations in the network - shown on the map - Cairngorm Summit, Aonach Mor (at 1130masl, Inverness-shire), Bealach na Ba (at 773masl, Wester Ross), Cairnwell (at 928masl, Aberdeenshire) and Great Dun Fell (at 847masl, Cumbria) all recorded gusts in excess of 100mph (87Kt).

**Maximum Gust Speed
20 October 2024****Max Gust (Kt)**

- 0 - 20
- 20 - 30
- 30 - 40
- 40 - 50
- 50 - 60
- 60 - 70
- 70 - 80
- > 80
- mountain station



Author: Mike Kendon, Met Office National Climate Information Centre

Last updated 24/10/2024